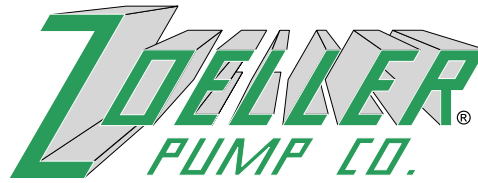


"QUALITY PUMPS SINCE 1939"



SECTION: 2.60.040  
FM2335  
0705  
Supersedes  
New

Product information presented here reflects conditions at time of publication. Consult factory regarding discrepancies or inconsistencies.

MAIL TO: P.O. BOX 16347 • Louisville, KY 40256-0347  
SHIP TO: 3649 Cane Run Road • Louisville, KY 40211-1961  
(502) 778-2731 • 1 (800) 928-PUMP • FAX (502) 774-3624

visit our web site:  
[www.zoeller.com](http://www.zoeller.com)

# DRAIN PUMP SERIES

104\* - 105 - 110 - 115 - 120 - 131

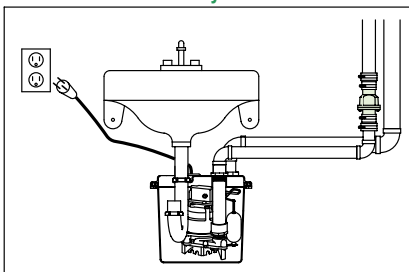
## Model 132\* (Preassembled)

Removes water from areas where gravity flow is not available.

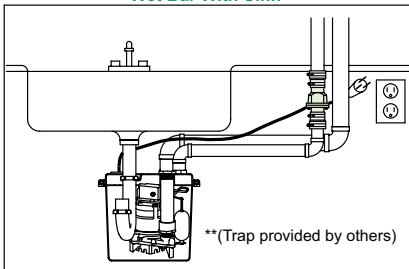
Applications include, laundry tray pump, wet bar sink, lavatory, air conditioning condensate or dehumidifier water removal. It can also be used in conjunction with dishwashers and garbage disposal applications.

Internal Trap\*\*

Lavatory Sink

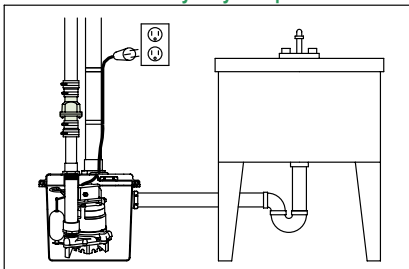


Wet Bar With Sink

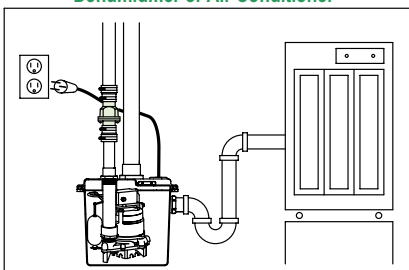


\*\* (Trap provided by others)

Laundry Tray Pump



Dehumidifier or Air Conditioner



Standard Installation

**NO INLET FILTERS OR SCREENS TO CLEAN**



\*Models 104 & 132 are not IAPMO approved.

**NEW!**  
CAN BE  
INSTALLED WITH  
INTERNAL  
TRAP



**NEW!**  
OPTIONAL INLET  
TOP / SIDE

Product may not be exactly as pictured.

### DRAIN PUMP SERIES INCLUDES:

- Automatic pumps with tank cord seals and all hardware for easy assembly.
- Polypropylene basin and lid.
- Internal discharge pipe to lid. (Trap supplied by others)\*\*
- Check Valve (30-0181, not included with model 104).

#### DRAIN PUMP SERIES

104\*  
105  
110  
115  
120  
131  
132\*

#### MODEL PUMP WITH BASIN

M72  
M53  
M55  
M57  
M59  
M98  
M72

#### SHIPPING WT.

19 lbs.  
30 lbs.  
33 lbs.  
35 lbs.  
38 lbs.  
47 lbs.  
19 lbs.

## COMPARE THESE FEATURES

### PUMP FEATURES

(Models 53-55-57-59-98)

- Passes laundry lint.
- Automatic, float operated mechanical switch.
- 115 V/1 PH, all Drain Pump Series.
- 9 ft. UL Listed 3-wire cord and plug. (15 ft. cord std. on model 98)
- Stainless steel screws, guard, handle and switch arm.
- Passes 1/2" spherical solids.
- 1 1/2" NPT discharge.
- 1550 RPM, 60 Hz. 1725 RPM on model 98.
- Non-clogging vortex impeller.
- Glass-filled polypropylene base with built in strainer on M53 and M55. Model 59, all bronze construction; model 57 & 98 all cast iron construction.
- Temperature rated 130°F.
- UL Listed Pump.

(Model 72)

- Passes laundry lint.
- 115 V/1 PH, all Drain Pump Series.
- 9 ft. UL Listed 3-wire cord and plug.
- Stainless steel screws, switch arm and lower motor housing.
- Oil free.
- Passes 3/8" spherical solids.
- 1 1/2" NPT discharge.
- 3400 RPM.
- Non-clogging vortex impeller.
- Temperature rated 110°F.
- cCSAus Certified Pump.

### BASIN

- Polypropylene construction.
- Corrosion resistant.
- High capacity.
- Gasket sealed polypropylene lid.
- 2" NPT vent.
- 1 1/2" NPT discharge.
- 1 1/2" compression slip fit for top and side intake. NOTE: 132 comes preassembled for side inlet only.
- Threaded connections for easy installation.
- May be installed with internal trap for space savings.
- Gas tight cover.
- Temperature rated 130°F.
- Fits under most sinks.
- Basin Passes 10' Stack Test.\*

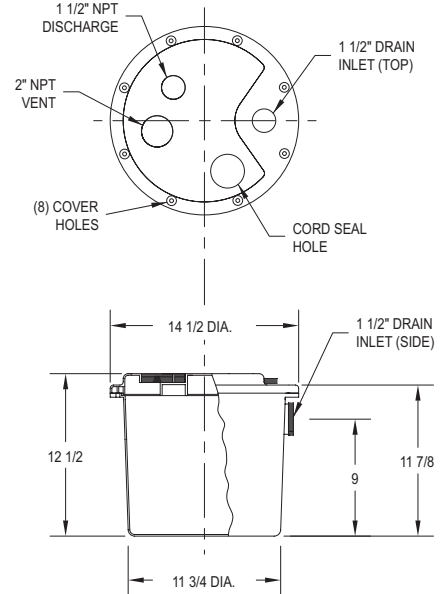
\*Models 104 and 132 will not pass 10' Stack Test

### CHECK VALVE(excluding Model 104) (30-0181)

- "Full Flow" design.
- 1 1/2" or 1 1/4" slip x slip union.
- PVC construction.

For additional specifications see FM0217.

NOTE: For additional inlet option or high head applications contact factory.

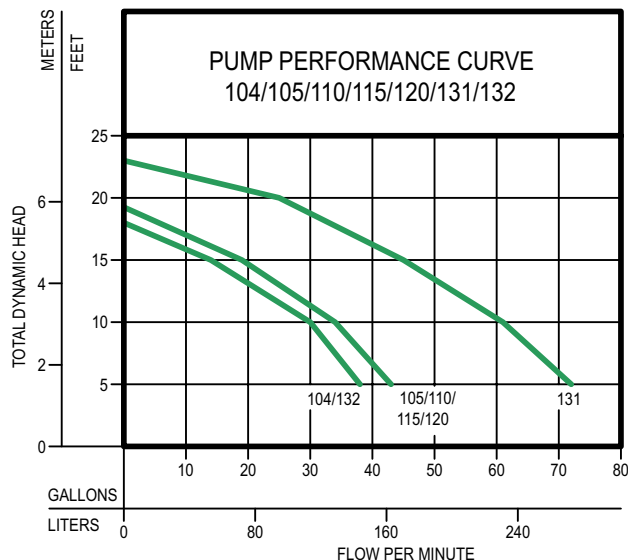


SK2012

## EASY INSTALLATION - NO NEED TO DIG A SUMP.



**WARNING** TO REDUCE THE RISK OF ELECTRICAL SHOCK A PROPERLY GROUNDED RECEPTACLE OF GROUNDING TYPE SHALL BE INSTALLED AND PROTECTED BY A GROUND FAULT CIRCUIT INTERRUPTER (GFCI) IN ACCORDANCE WITH NATIONAL ELECTRICAL CODE AND LOCAL CODES. DO NOT REMOVE GROUND PIN FROM PLUG.



MODELS	104/132		105/110 115/120		131		
	Feet	Meters	Gal.	Liters	Gal.	Liters	
5	1.5	38	144	43	163	72	273
10	3.0	30	114	34	129	61	231
15	4.6	14	53	19	72	45	170
20	6.1	--	--	--	--	25	95
Shut-off Head:		18 ft. (5.5m)		19.25 ft. (5.9m)		23 ft. (7.0m)	

009898

DRAIN PUMP MODEL	REPLACEMENT PUMP PART NUMBER
104	72-0001
105	007917
110	007918
115	007919
120	007920
131	007921
132	72-0001

## RESERVE POWERED DESIGN

For unusual conditions a reserve safety factor is engineered into the design of every Zoeller pump.

© Copyright 2005 Zoeller Co. All rights reserved.